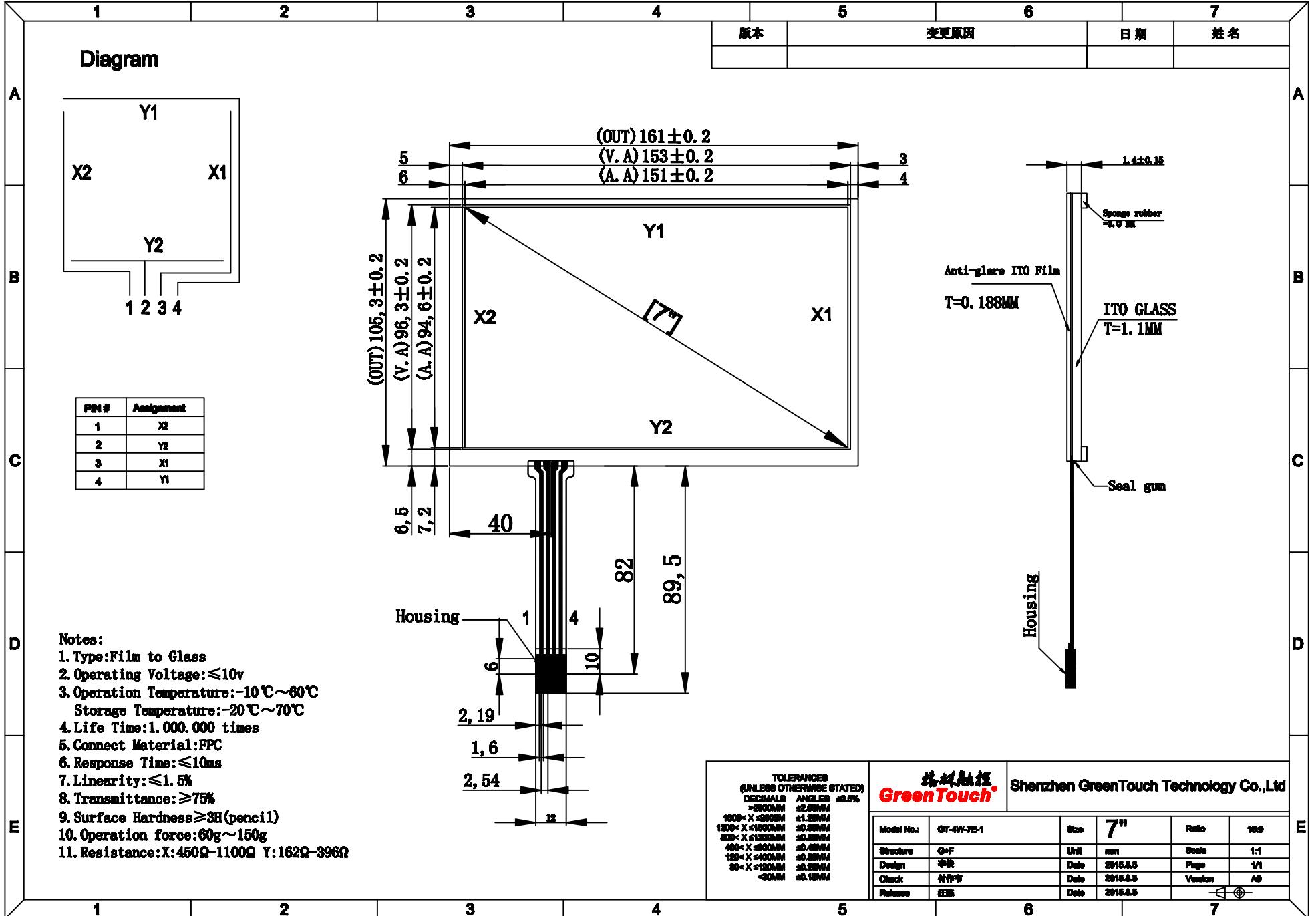


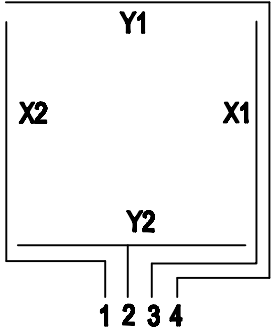
由 Autodesk 教育版产品制作

由 Autodesk 教育版产品制作

由 Autodesk 教育版产品制作



Diagram



PN#	Assignment
1	X2
2	Y2
3	X1
4	Y1

Notes:

- Type: Film to Glass
- Operating Voltage: $\leq 10v$
- Operation Temperature: $-10^{\circ}C \sim 60^{\circ}C$
Storage Temperature: $-20^{\circ}C \sim 70^{\circ}C$
- Life Time: 1,000,000 times
- Connect Material: FPC
- Response Time: $\leq 10ms$
- Linearity: $\leq 1.5\%$
- Transmittance: $\geq 75\%$
- Surface Hardness $\geq 3H$ (pencil)
- Operation force: 60g~150g
- Resistance: X: 450 Ω ~1100 Ω Y: 162 Ω ~396 Ω

TOLERANCES (UNLESS OTHERWISE STATED)	
DECIMALS	ANGLES
>30.0MM	$\pm 0.5^{\circ}$
10.0 - 30.0MM	$\pm 0.25^{\circ}$
3.0 - 10.0MM	$\pm 0.15^{\circ}$
0.5 - 3.0MM	$\pm 0.10^{\circ}$
0.2 - 0.5MM	$\pm 0.05^{\circ}$
0.1 - 0.2MM	$\pm 0.025^{\circ}$
<0.1MM	$\pm 0.015^{\circ}$

绿触科技 GreenTouch		Shenzhen GreenTouch Technology Co.,Ltd			
Model No.:	GT-4H-7E-1	Size	7"	Ratio	16:9
Structure	G+F	Unit	mm	Scale	1:1
Design	李俊	Date	2015.5.5	Page	1/1
Check	付作军	Date	2015.5.5	Version	A0
Release	江燕	Date	2015.5.5		

由 Autodesk 教育版产品制作